

PORT AUTHORITY

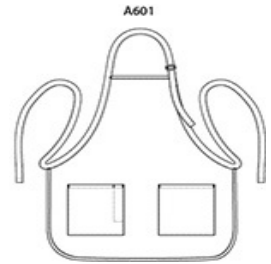
Port Authority® Medium-Length Two-Pocket Bib Apron. A601

Stay looking neat and clean in this durable apron that features two easy-access pockets.

-
- 7-ounce, 65/35 poly/cotton twill
- Adjustable neck strap
- Two front patch pockets, pen pocket
- Color-coordinates with CP80, C914 and CP45 caps
- Measures: 22"w x 24"l

CARE INSTRUCTIONS

Machine Wash Cold, Only Non Chlorine Bleach when needed,
Tumble Dry Low, Do Not Dry Clean.



front



SIZE CHART

	OSFA
Length	24
Apron Waist Width	22
Pocket Height	8
Pocket Length	6 3/4

COLOR INFORMATION

Please note: PMS code information is shown only when an exact match is available.



Black
PMS BLACK C



Charcoal
PMS 2334C



Kelly Green
PMS 7727C



Navy
PMS 433C



Red
PMS 7427C



Royal
PMS 7687C