

Port & Company® Infant Core Fleece Full-Zip Hooded Sweatshirt. CAR78IZH



Our popular 7.8-ounce hooded sweatshirt designed for the smallest family members. Color-coordinated with our adult PC78, 7.8-ounce Core Fleece Sweatshirts.

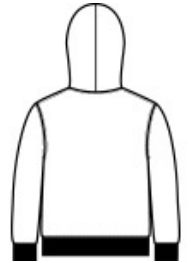
- 7.8-ounce, 50/50 cotton/poly fleece
- Air jet yarn for softness
- No draw cord at hood

CARE INSTRUCTIONS

Machine wash cold, inside out with like colors, only non-chlorine bleach when needed. Tumble dry medium. Do not iron.



front



back

HOW TO MEASURE



CHEST WIDTH

Measure under the arm and around the fullest part of the chest with arms down, keeping tape horizontal.

SIZE CHART

	06M	12M	18M
Weight (lbs)	12-17	17-22	22-27
Height	23-27	27-28	29-31

COLOR INFORMATION

Please note: PMS code information is shown only when an exact match is available.



Athletic Heather
PMS COOL GRAY
7C



Candy Pink
PMS 189C



Jet Black
PMS BLACK C



Navy
PMS 2380C



Red
PMS 200C



Royal
PMS 2133C