



# Carhartt® Thermal-Lined Duck Active Jac. CT106678



Whether you're on a land survey or construction road crew, this hooded jacket is designed to keep you comfortable when the weather is iffy.

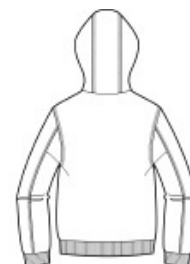
- 12-ounce, firm hand, 100% ring spun cotton duck canvas
- Wind Fighter® technology tames wind
- Polyester thermal lining
- Attached thermal-lined three-piece hood with draw cord closure
- Full-length brass front zipper
- Two interior pockets: one zippered, one hook and loop
- Two large lower-front pockets
- Rib knit cuffs and waistband
- Carhartt-strong, triple-stitched main seams
- Carhartt label sewn on left pocket
- Loose fit

## CARE INSTRUCTIONS

Color Black: Machine wash cold with like colors. Do not bleach. Tumble dry low remove promptly. Steam iron shell only. All colors except Black: Machine wash warm with like colors. Do not bleach. Tumble dry medium remove promptly. Steam iron shell only.

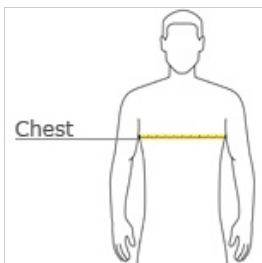


front



back

## HOW TO MEASURE



### CHEST WIDTH

Measure under the arm and around the fullest part of the chest with arms down, keeping tape horizontal.

## SIZE CHART

	S	M	L	XL	2XL	3XL	4XL	5XL
Chest	34-36	38-40	42-44	46-48	50-52	54-56	58-60	62-64

## COLOR INFORMATION

Please note: PMS code information is shown only when an exact match is available.



Black  
PMS BLACK C



Carhartt Brown  
PMS 463C



Dark Navy  
PMS 533C