



Eddie Bauer® Women's Highpoint Fleece Jacket. EB241



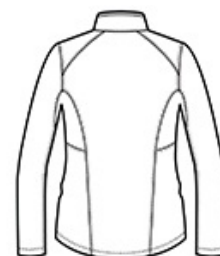
Made for movement, this sophisticated, stretch-infused twill fleece jacket has a smooth face and brushed fleece backing. Tonal welding details at the pockets and streamlined tailoring give it a refined look for indoor and outdoor uses. Beautifully shaped, feminine collar. Molded reverse coil zippers. Front zippered pockets. Contrast Eddie Bauer heat transfer logo on the right hem. Made of 8.3-ounce, 94/6 poly/spandex fleece with an anti-pill finish.

CARE INSTRUCTIONS

Machine wash cold. Do not bleach. Tumble dry low. Remove promptly. Cool iron if needed. Do not use softeners

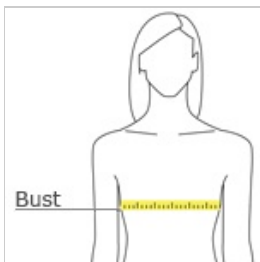


front



back

HOW TO MEASURE



BUST

Measure under the arm and around the fullest part of the bust with arms down, keeping tape horizontal.

SIZE CHART

	XS	S	M	L	XL	2XL	3XL	4XL
Size	2	4/6	8/10	12/14	16/18	20/22	24/26	28/30
Bust	32-33	34-35	36-37	38-40	41-43	44-46	47-49	50-52

COLOR INFORMATION

Please note: PMS code information is shown only when an exact match is available.



Black
PMS BLACK C



Metal Grey
PMS COOL GREY
9 C