



Eddie Bauer® Shirt Jac. EB502



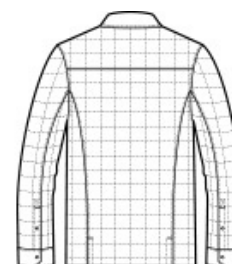
Midweight jacket with armth meets collared shirt style in this shirt jac that blurs the line between the great outdoors and indoors. Snap-front closure and snap cuffs. Drop-in left chest pocket. Contrast Eddie Bauer heat transfer logo on the right hem. Decoration access pocket. Made of 100% polyester fabric and 1.8-ounce, 100% polyester fill. Water-resistant with a PU coating.

CARE INSTRUCTIONS

Machine Wash Cold, Inside Out With Like Colors, Do Not Use Fabric Softener, Only Non-Chlorine Bleach When Needed, Tumble Dry Low, Do Not Iron, Do Not Dry Clean.



front



back

HOW TO MEASURE



CHEST WIDTH

Measure under the arm and around the fullest part of the chest with arms down, keeping tape horizontal.

SIZE CHART

	4XL	XS	S	M	L	XL	2XL	3XL
Chest	55-57	32-34	35-37	38-40	41-43	44-46	48-50	52-54

COLOR INFORMATION

Please note: PMS code information is shown only when an exact match is available.



Black
PMS BLACK C



Charcoal Grey
Heather
PMS 7540C