

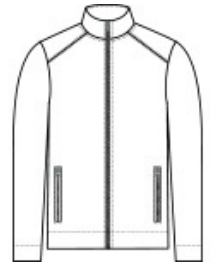


With a classic pique look, this brushed-back fleece has professional style thanks to its sophisticated metal zippers.

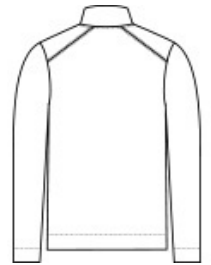
- 9.7-ounce, 58/42 cotton/polyester fleece with pique face and brushed back
- Metal center front zipper
- Metal zippered hand pockets
- Deeper cuffs and hem

CARE INSTRUCTIONS

Machine Wash Cold With Like Colors. Only Non-Chlorine Bleach When Needed. Tumble Dry Low. Cool Iron If Necessary.



front



back

HOW TO MEASURE



CHEST WIDTH

Measure under the arm and around the fullest part of the chest with arms down, keeping tape horizontal.

SIZE CHART

| | XS | S | M | L | XL | 2XL | 3XL | 4XL |
|-------|-------|-------|-------|-------|-------|-------|-------|-------|
| Chest | 32-34 | 35-37 | 38-40 | 41-43 | 44-46 | 47-49 | 50-53 | 54-57 |

COLOR INFORMATION

Please note: PMS code information is shown only when an exact match is available.



Charcoal
PMS 432C



Deep Black
PMS BLACK C



Grey Heather
PMS 424C