

PORT AUTHORITY

Port Authority® Collective Smooth Fleece Vest F906



A smooth face, brushed back and coverstitching make this warm fleece vest a classier alternative to more casual fleece.

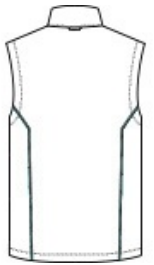
- Can be zipped in and secured by snap attachment inside an outer Collective layer
- 5.9-ounce, 100% polyester fleece
- Dyed-to-match and contrast coverstitch
- Slightly longer length
- Molded center front zipper
- Front reverse-coil zippered pockets

CARE INSTRUCTIONS

Machine Wash Cold. Only Non-Chlorine Bleach When Needed.
Tumble Dry Medium. Warm Iron If Necessary. Do Not Dry Clean.



front



back

HOW TO MEASURE



CHEST WIDTH

Measure under the arm and around the fullest part of the chest with arms down, keeping tape horizontal.

SIZE CHART

| | XS | S | M | L | XL | 2XL | 3XL | 4XL |
|-------|-------|-------|-------|-------|-------|-------|-------|-------|
| Chest | 32-34 | 35-37 | 38-40 | 41-43 | 44-46 | 47-49 | 50-53 | 54-57 |

COLOR INFORMATION

Please note: PMS code information is shown only when an exact match is available.



Deep Black
PMS BLACK C



Graphite
PMS 425C



River Blue Navy
PMS 533C