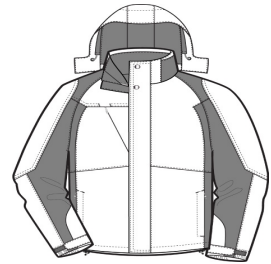


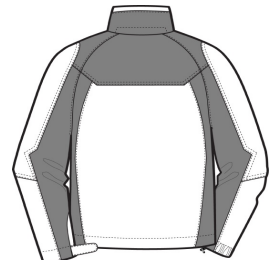


This jacket offers three great layers for one great price. The plush microfleece jacket is perfect on cool days; the critically seam-sealed, waterproof shell on rainy days; or combine the two for more protection.

- 100% polyester shell
- 100% polyester lining
- 3000MM fabric waterproof rating
- Critically seam-sealed for added waterproof protection
- 3000G/M<sup>2</sup> fabric breathability rating
- Detachable hood with adjustable self-fabric tab, draw cord and toggles
- Interior storm flap with hook and loop closures and chin guard
- Two-way Vislon zipper
- Front zippered pockets
- Half elastic, half self-fabric adjustable tab cuffs with hook and loop closures
- Port Pocket™ for decoration access
- 100% polyester microfleece inner jacket has an anti-pill finish and open cuffs with spandex binding
- Open hem with draw cord and toggles



front

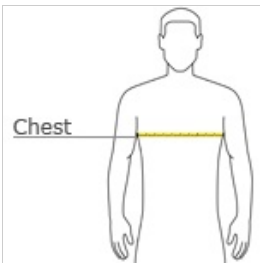


back

**CARE INSTRUCTIONS**

Machine wash cold on gentle cycle with like colors. Use mild detergent. Remove immediately. Do not allow to lay on itself when wet. Tumble dry low. Cool iron if needed. Do not dry clean.

**HOW TO MEASURE**



**CHEST WIDTH**

Measure under the arm and around the fullest part of the chest with arms down, keeping tape horizontal.

**SIZE CHART**

	XS	S	M	L	XL	2XL	3XL	4XL
Chest Size (inches)	32-34	35-37	38-40	41-43	44-46	47-49	50-53	54-57

**COLOR INFORMATION**

Please note: PMS code information is shown only when an exact match is available.



Black/ Ink Grey  
PMS BLACK C



Insignia Blue/  
Navy Eclipse  
PMS 2378C