

PORT AUTHORITY

# Port Authority® Zephyr 1/2-Zip Pullover. J343



This Zephyr style merges wind- and water-resisting performance with a silky smooth hand. This unlined piece is easy to wear over base or thermal layers. Modern sleek details offer instant appeal at a very appealing price.

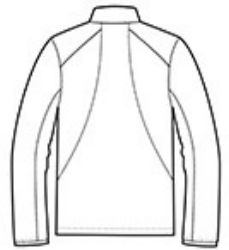
- 100% polyester shell
- Zip-through cadet collar with chin guard
- Set-in sleeves
- Elastic binding at cuffs
- Left side seam zipper for easy on/off
- Open hem with adjustable locking draw cord

### CARE INSTRUCTIONS

Machine wash cold with like colors. Do not bleach or use fabric softener. Tumble dry low. Remove promptly. Do not iron. Do not dry clean.



front



back

### HOW TO MEASURE



#### CHEST WIDTH

Measure under the arm and around the fullest part of the chest with arms down, keeping tape horizontal.

### SIZE CHART

	XS	S	M	L	XL	2XL	3XL	4XL
Chest	32-34	35-37	38-40	41-43	44-46	47-49	50-53	54-57

### COLOR INFORMATION

Please note: PMS code information is shown only when an exact match is available.



Black  
PMS BLACK C



Dress Blue Navy  
PMS 533C



Grey Steel  
PMS 425C