

SPORT-TEK®

Sport-Tek® Women's Dri-Mesh® Pro Polo. L474



Ventilation panels combine with our ultra-dry mesh technology to create our coolest, most breathable polo. Stretch gussets add extra mobility.

- 4-ounce, 100% polyester mini pique on body
- 4.4-ounce, 94/6 poly/spandex stretch mesh at raglan sleeves, back and side panels
- Tag-free label
- Flat knit collar
- 5-button placket with dyed-to-match buttons
- Raglan sleeves

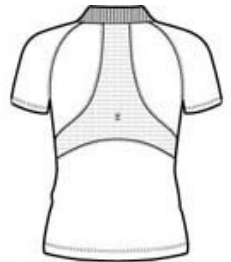
**Due to the nature of 100% polyester performance fabrics, special care must be taken throughout the screen printing process.*

CARE INSTRUCTIONS

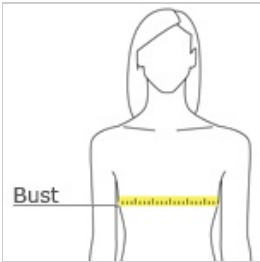
Machine wash cold with like colors, only non-chlorine bleach when needed, tumble dry low, do not use softener, remove promptly, cool iron if necessary.



front



back

HOW TO MEASURE**BUST**

Measure under the arm and around the fullest part of the bust with arms down, keeping tape horizontal.

SIZE CHART

| | XS | S | M | L | XL | XXL | 3XL | 4XL |
|------|-------|-------|-------|-------|-------|-------|-------|-------|
| Size | 2 | 4/6 | 8/10 | 12/14 | 16/18 | 20/22 | 24/26 | 28/30 |
| Bust | 32-34 | 35-36 | 37-38 | 39-41 | 42-44 | 45-47 | 48-51 | 52-55 |

COLOR INFORMATION

Please note: PMS code information is shown only when an exact match is available.

