



This comfortable wash-and-wear shirt is indispensable for the workday. Wrinkle resistance makes this shirt a cut above the competition so you and your staff can be, too.

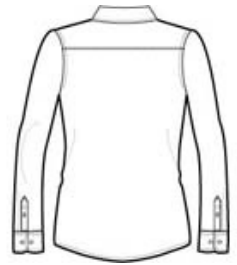
- 4.5-ounce, 55/45 cotton/poly
- Traditional, relaxed look
- Open collar
- Dyed-to-match buttons
- Adjustable cuffs
- White, Athletic Gold, Texas Orange, Red, Burgundy, Coffee Bean, Light Blue, Navy, Classic Navy, Steel Grey, Purple and Black have a Light Stone contrast neckband.
- Light Stone and Royal have a Classic Navy contrast neckband.
- Dark Green has a Navy contrast neckband.

CARE INSTRUCTIONS

Machine wash warm with like colors. Only non-chlorine bleach when needed. Tumble dry low. Warm iron if necessary.



front



back

HOW TO MEASURE



BUST

Measure under the arm and around the fullest part of the bust with arms down, keeping tape horizontal.

ARM

Place hand on hip. Start at the center of the back of the neck and measure across the shoulder, to the elbow, and then down to the wrist.

SIZE CHART

	XS	S	M	L	XL	XXL	3XL	4XL	5XL	6XL
Size	2	4/6	8/10	12/14	16/18	20/22	24/26	28/30	32/34	36/38
Bust	32-34	35-36	37-38	39-41	42-44	45-47	48-51	52-55	56-59	60-63
Arm	30-30 3/4	30 3/4-31 1/2	31 1/2-32	32-32 1/2	32 1/2 - 33	33-33 3/8	33 3/8-33 3/4	33 3/4-34 1/2	34 1/4-34 3/4	34 1/2-35

COLOR INFORMATION

Please note: PMS code information is shown only when an exact match is available.

										
Black/ Light Stone PMS BLACK C	Burgundy/ Light Stone PMS 7428C	Classic Navy/ Light Stone PMS 433C	Clover Green PMS 7763C	Court Green PMS 7724C	Dark Green/ Navy PMS 5467C	Light Blue/ Light Stone PMS 7451C	Light Pink PMS 196C	Light Stone/ Classic Navy PMS 9202C	Maui Blue PMS 2200C	Mediterranean Blue PMS 2118C
										
Navy/ Light Stone PMS 533c	Purple/ Light Stone PMS 7679C	Red/ Light Stone PMS 187C	Royal/ Classic Navy PMS 7687 C	Steel Grey/ Light Stone PMS 7540C	Stone	Strong Blue PMS 2133C	Teal Green PMS 7715C	Texas Orange/ Light Stone PMS 7584C	Ultramarine Blue PMS 7455C	White/ Light Stone PMS 9202C