

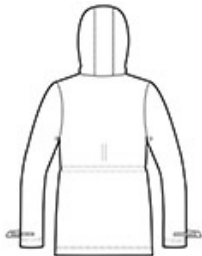


We reinvented our classic rain jacket with this critically seam-sealed slicker that features water resistance, a soft hand feel and reflective details for enhanced visibility and a modern look.

- 100% PU-coated polyester
- 100% polyester mesh-lined body and hood
- 100% polyester-lined sleeves
- 1500MM fabric waterproof rating
- Attached hood w ith adjustable locking draw cord
- Molded zipper
- Grommets for breathability under arms
- Longer length w ith adjustable locking draw cord waist
- Adjustable self-fabric tab cuffs w ith hook and loop closures and reflective detail
- Front zippered pockets w ith reflective detail
- Port Pocket™ for decoration access
- Open hem w ith adjustable locking draw cord
- Reflective details at back



front

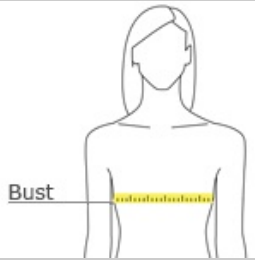


back

CARE INSTRUCTIONS

Machine wash cold. Only non-chlorine bleach when needed.
Line dry. Do not iron. Do not dry clean.

HOW TO MEASURE



BUST
Measure under the arm and around the fullest part of the bust with arms down, keeping tape horizontal.

SIZE CHART

	XS	S	M	L	XL	XXL	3XL	4XL
Size	2	4/6	8/10	12/14	16/18	20/22	24/26	28/30
Bust	32-34	35-36	37-38	39-41	42-44	45-47	48-51	52-55

COLOR INFORMATION

Please note: PMS code information is shown only when an exact match is available.



Black
PMS BLACK C



Navy
PMS 532C



Northern Grey
PMS 424C