

SPORT-TEK®

Sport-Tek® Women's PosiCharge® Tri-Blend Wicking Fleece Jogger LST299

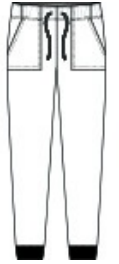


A flattering, moisture-wicking jogger with an adjustable draw cord waistband to accommodate a wide variety of body types.

- 7.1-ounce, 75/13/12 poly/cotton/rayon with PosiCharge technology
- Adjustable elastic interior waistband with exterior draw cord
- Tear-away removable label
- Front pockets
- 1x1 rib knit cuffs

CARE INSTRUCTIONS

Machine wash cold with like colors; do not use fabric softener; only non-chlorine bleach, when needed; tumble dry low; remove promptly; cool iron, if necessary; do not dry clean.

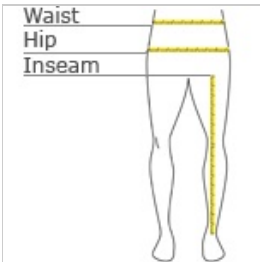


front



back

HOW TO MEASURE



WAIST

Measure around the smallest part of the natural waist.

HIPS

With feet together, measure around the fullest part of hips, keep tape horizontal.

INSEAM

Measure a similar style pant that fits well and is the desired length. Measure from the crotch seam to the hem.

SIZE CHART

| | XS | S | M | L | XL | XXL | 3XL | 4XL |
|-------|-------|-------|-------|-------|-------|-------|-------|-------|
| Size | 2 | 4/6 | 8/10 | 12/14 | 16/18 | 20/22 | 24/26 | 28/30 |
| Waist | 24-26 | 27-28 | 29-30 | 31-33 | 34-36 | 37-39 | 40-43 | 44-47 |
| Hip | 34-36 | 37-38 | 39-40 | 41-43 | 44-46 | 47-49 | 50-53 | 54-57 |

COLOR INFORMATION

Please note: PMS code information is shown only when an exact match is available.



Black Triad Solid
PMS BLACK C



Dark Grey Heather
PMS COOL GRAY
11C