



Mercer+Mettle® Women's Stretch Drop Shoulder Pullover MM3013

A polished take on a classic sweatshirt delivers year-round versatility. The features include a wide, self-fabric crew neck and a relaxed fit. The straight drop hem has side vents and a turned cuff, for a perfect drape when untucked.

Fabric+Weight

- 7.4-ounce, 53/41/6 rayon/poly/spandex French terry

Features+Benefits

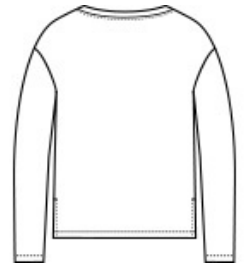
- Wide, self-fabric crew neck
- Drop shoulders
- Self-turned cuffs
- Straight drop hem
- Side vents

CARE INSTRUCTIONS

Machine Wash Cold With Like Colors. Do Not Use Fabric Softener. Do Not Bleach. Tumble Dry Low. Remove Promptly. Cool Iron If Necessary.

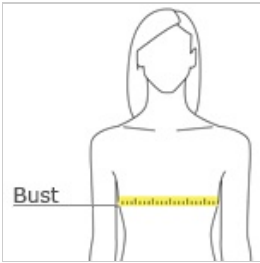


front



back

HOW TO MEASURE



BUST

Measure under the arm and around the fullest part of the bust with arms down, keeping tape horizontal.

SIZE CHART

	XS	S	M	L	XL	2XL	3XL	4XL
Size	2	4/6	8/10	12/14	16/18	20/22	24/26	28/30
Bust	32-34	35-36	37-38	39-41	42-44	45-47	48-51	52-55

COLOR INFORMATION

Please note: PMS code information is shown only when an exact match is available.



Anchor Grey
PMS 426C



Deep Black
PMS BLACK C



Night Navy
PMS 532C