



# Mercer+Mettle® Women's Relaxed Knit Blazer

## MM3031



A classic silhouette and timeless design, this sophisticated blazer is a wardrobe staple that will never go out of style. Designed with comfort in mind, the snag-resistant double knit pique fabric will move with you throughout the day for a polished and professional look no matter what the occasion.

### Fabric+Weight

- 9.1-ounce, 71/26/3 poly/rayon/spandex double knit pique

### Features+Benefits

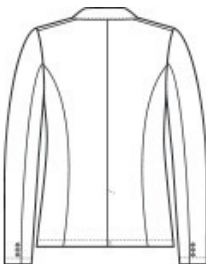
- Machine washable
- Snag-resistant
- Unlined
- Notched lapel collar
- 1-button single-breasted blazer
- Horn-tone buttons
- Front patch pockets
- 3 decorative cuff buttons
- Single back vent

### CARE INSTRUCTIONS

Machine Wash Cold With Like Colors. Do Not Use Fabric Softener. Do Not Bleach. Tumble Dry Low. Remove Promptly. Cool Iron If Necessary.

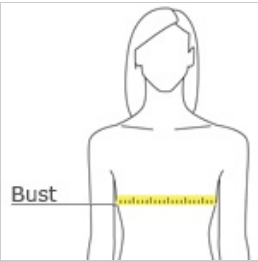


front



back

### HOW TO MEASURE



**BUST**  
Measure under the arm and around the fullest part of the bust with arms down, keeping tape horizontal.

### SIZE CHART

	XS	S	M	L	XL	2XL	3XL	4XL
Size	2	4/6	8/10	12/14	16/18	20/22	24/26	28/30
Bust	32-34	35-36	37-38	39-41	42-44	45-47	48-51	52-55

### COLOR INFORMATION

Please note: PMS code information is shown only when an exact match is available.



Deep Black  
PMS BLACK C



Storm Grey  
Heather