



Mercer+Mettle® Women's Faille Soft Shell MM7101



For rain-repelling and work-life blending, this shell has a refined, easy-moving shape and technical DWR-finished fabric. Reverse coil zip pockets keep essentials dry, safe and in place while the black, oxidized molded zipper extends through the collar.

Fabric+Weight

- 77/23 nylon/spandex bonded to a water-resistant film insert and 100% polyester jersey lining
- 5K/5K waterproof breathable fabric

Features+Benefits

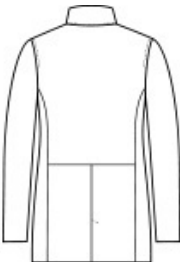
- Durable water-repellent (DWR) finish
- Black oxidized molded 2-way zipper
- Hidden reverse coil zip pockets
- Slightly longer length
- Vent at center back hem

CARE INSTRUCTIONS

Machine Wash Cold, Gentle Cycle. Tumble Dry Low. Cool Iron If Needed. Do Not Bleach. Do Not Dry Clean.

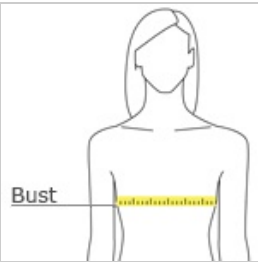


front



back

HOW TO MEASURE



BUST
Measure under the arm and around the fullest part of the bust with arms down, keeping tape horizontal.

SIZE CHART

	XS	S	M	L	XL	2XL	3XL	4XL
Size	2	4/6	8/10	12/14	16/18	20/22	24/26	28/30
Bust	32-34	35-36	37-38	39-41	42-44	45-47	48-51	52-55

COLOR INFORMATION

Please note: PMS code information is shown only when an exact match is available.



Anchor Grey
PMS 426C



Deep Black
PMS Black C