



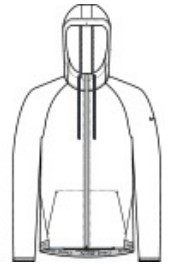
Nike Pro Hooded Jacket NKFQ4761



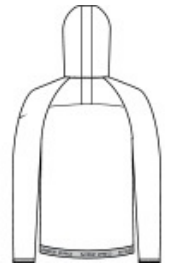
Developed for training and beyond, Nike Pro is all about feeling confident and doing your best. This breathable jacket steps up with Dri-FIT moisture management technology for optimal performance. Details include an adjustable hood, dyed-to-match draw cords, exposed dyed-to-match zipper, zippered front pockets and elastic cuffs. Navy/Game Royal has a contrast color hood panel. The contrast heat transfer Swosh logo is on the left sleeve. Includes a Nike Pro branded elastic back hem. Made of 3.5-ounce, 80/20 polyester/elastane Dri-FIT fabric with at least 75% recycled content.

CARE INSTRUCTIONS

Wash With Like Colors. Do Not Use Softeners. Remove Immediately. Do Not Allow To Lay On Itself When Wet.



front



back

HOW TO MEASURE



CHEST WIDTH

Measure under the arm and around the fullest part of the chest with arms down, keeping tape horizontal.

SIZE CHART

	XS	S	M	L	XL	2XL	3XL	4XL
Chest	32-35	35-37 1/2	37 1/2-41	41-44	44-48 1/2	48 1/2 -53 1/2	53 1/2 - 58	58-63

COLOR INFORMATION

Please note: PMS code information is shown only when an exact match is available.



Anthracite
PMS 446C



Black
PMS BLACK C



Navy/ Game
Royal
PMS 533C