



Stay active in performance sweatshirts powered by Dry Zone® moisture-wicking technology.

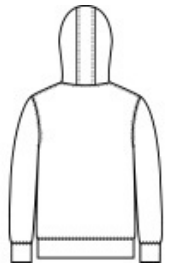
- 5.9-ounce, 100% polyester
- Removable tag for comfort and relabeling
- Taped neck
- 3-panel hood
- No draw cords at hood
- Locker patch
- Front pouch pocket
- Self-fabric cuffs and hem

CARE INSTRUCTIONS

Machine wash cold, inside out with like colors, only non-chlorine bleach when needed. Tumble dry low. Do not use fabric softener.



front



back

HOW TO MEASURE



CHEST WIDTH

Measure under the arm and around the fullest part of the chest with arms down, keeping tape horizontal.

SIZE CHART

| | XS | S | M | L | XL |
|-------|-------|-------|-------|-------|-------|
| Size | 4 | 6/8 | 10/12 | 14/16 | 18/20 |
| Chest | 25-26 | 26-28 | 28-30 | 30-32 | 32-35 |

COLOR INFORMATION

Please note: PMS code information is shown only when an exact match is available.



Charcoal
PMS 4294C



Deep Navy
PMS 532C



Jet Black
PMS BLACK C



Red
PMS 200C



Royal
PMS 2133C



Silver
PMS 435C