



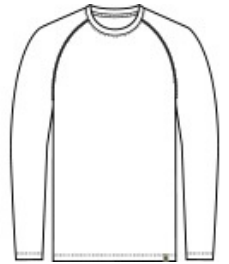
Russell Outdoors™ Realtree® Performance Long Sleeve Tee RU150LS

For the outdoor enthusiast who wants the Realtree EDGE® print but prefers a more technical feel, moisture-wicking and long sleeve coverage. It's a perfect base layer or stand-alone tee, ready for work, chores or exploring the great outdoors.

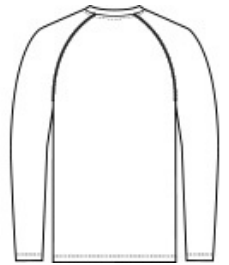
- 3.8-ounce, 100% polyester with moisture-wicking
- Tag-free label
- Realtree EDGE® print
- Shoulder-to-shoulder neck taping
- Exterior woven Russell Outdoors™ tab at hem

CARE INSTRUCTIONS

Machine Wash Cold With Like Colors. Do Not Use Fabric Softener. Do Not Bleach. Tumble Dry Low. Remove Promptly. Cool Iron If Needed.



front



back

HOW TO MEASURE



CHEST WIDTH

Measure under the arm and around the fullest part of the chest with arms down, keeping tape horizontal.

SIZE CHART

| | XS | S | M | L | XL | 2XL | 3XL | 4XL |
|-------|-------|-------|-------|-------|-------|-------|-------|-------|
| Chest | 32-34 | 35-37 | 38-40 | 41-43 | 44-46 | 47-49 | 50-53 | 54-57 |

COLOR INFORMATION

Please note: PMS code information is shown only when an exact match is available.



Realtree Edge