

**SPORT-TEK®**

## Sport-Tek® Endeavor Polo. ST467



With a subtle heather texture and moisture-wicking technology, this polo will help you achieve all your performance endeavors.

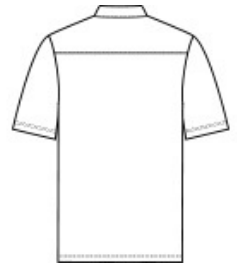
- 4.4-ounce, 100% polyester
- Tag-free label
- 3-button placket

### CARE INSTRUCTIONS

Machine wash cold with like colors. Do not use fabric softener. Do not bleach. Tumble dry low. Remove promptly. Cool iron if needed. Do not dry clean.

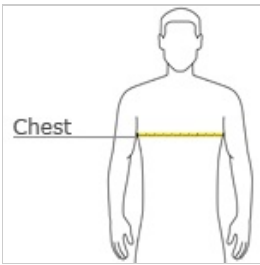


front



back

### HOW TO MEASURE



#### CHEST WIDTH

Measure under the arm and around the fullest part of the chest with arms down, keeping tape horizontal.

### SIZE CHART

	XS	S	M	L	XL	2XL	3XL	4XL
Chest	32-34	35-37	38-40	41-43	44-46	47-49	50-53	54-57

### COLOR INFORMATION

Please note: PMS code information is shown only when an exact match is available.



Black Heather  
PMS BLACK C



Dark Royal  
Heather  
PMS 2767C



Deep Navy  
Heather  
PMS 7547C



Light Grey Heather