

**SPORT-TEK®**

## Sport-Tek® Hooded Soft Shell Jacket ST980



With sporty raglan sleeves, wind-resistance and water-resistance, this soft shell is made to move with you—regardless of the weather.

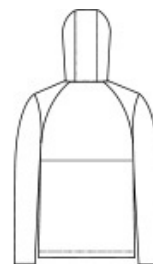
- 100% polyester knit shell with a durable water-repellent (DWR) coating bonded to a water-resistant film insert and a 100% polyester brushed tricot interior
- 5000MM fabric waterproof rating
- 5000G/M2 fabric breathability rating
- Three-panel hood with draw cord and toggles
- Set-in sleeves
- Coated reverse coil center front zipper
- Front reverse coil zippered pockets
- Elastic binding at cuffs
- Open hem

### CARE INSTRUCTIONS

Machine Wash Cold With Like Colors. Do Not Bleach. Do Not Use Fabric Softener. Tumble Dry Low. Do Not Iron.



front



back

### HOW TO MEASURE



#### CHEST WIDTH

Measure under the arm and around the fullest part of the chest with arms down, keeping tape horizontal.

### SIZE CHART

	XS	S	M	L	XL	2XL	3XL	4XL
Chest	32-34	35-37	38-40	41-43	44-46	47-49	50-53	54-57

### COLOR INFORMATION

Please note: PMS code information is shown only when an exact match is available.



Deep Black



Graphite



True Navy  
PMS 533C