

Core-Mark Label Printing

Installation Primer

Logging in from Outside Access

Version 2014.1.3.0

1 Introduction

The purpose of this document is to assist in the in-field installation of a Retail Label printer and related software drivers, and guide in the use of the new label printing functions integrated in various My Core-Mark user applications.

The software used is collectively called the Core-Mark Print Module, and is abbreviated as “CPM” in the following sections. The CPM is comprised of the following components:

1. The Label Printer and operating system level drivers.
2. The Print Manager software, which is an intermediate software layer that allows Core-Mark web applications to communicate with the Label Printer’s operating system drivers.
3. The Core-Mark.com applications which allow for user configuration, test and product label printing functions.

1.1 System Requirements

The CPM currently has the following system and browser requirements:

- Pentium base computer with at least 512 MB of RAM
- One of the following operating systems:
 - Windows XP SP3 with latest security updates
 - Windows 7 Pro (32 & 64 bit)
 - Windows 8
- Hard drive with at least 210 MB of free disk space
- Internet Explorer versions 7.0 and higher with both JavaScript and ActiveX controls enabled. (Both of these features are enabled by default and typically are not an issue.)
- A physical Label Printer installed and recognized in Windows.

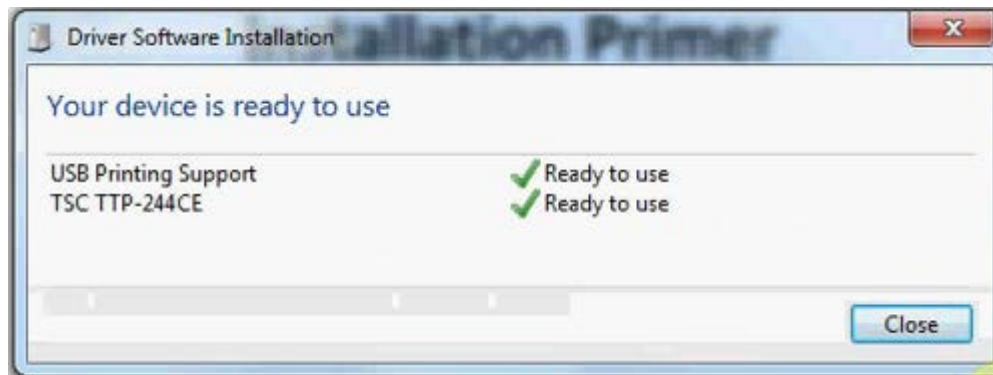
2 Install the Label Printer in Windows

Please follow the install instructions as provided by the label printer manufacturer. When complete, the printer should be recognized by Windows as an available printing device, as illustrated below for a TT034-50 Bar Code Printer provide by Signature Media Group.

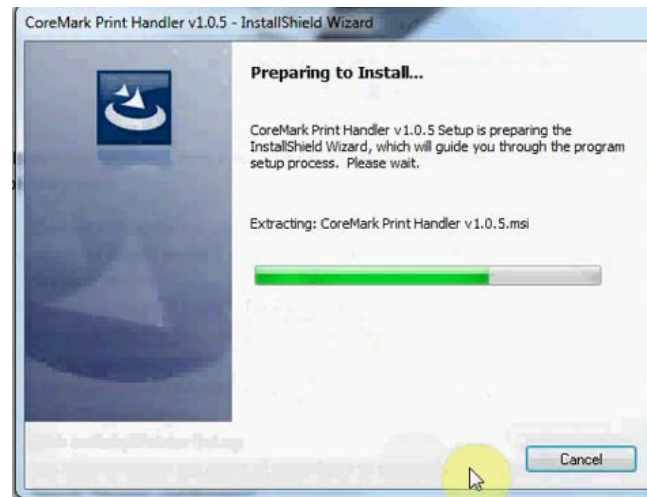


Installation steps may vary from one computer to another, but a typical installation would include the following steps:

- 2.1 **Connect the printer via USB cable to the computer and power it on by clicking the button on the back of the printer. Windows should detect the Printer as “TSC TTP-244CE”.**



- 2.2 **If your computer recognizes the printer as “USB Printing Support” under devices and printers in the control panel, download the printer driver by clicking here: [Download the Printer Driver](#). The “TSC TTP-244CE” printer should now show up as a printer on your computer after the installation steps.**
- 2.3 **Download the Core-Mark printer handler by clicking here: [Download the Print Handler](#). This may take a few minutes. The Print Engine is the “middle-ware” between the web browser and the Label printer Windows drivers and provides for the proper formatting of the label data and communication with the printer device.**

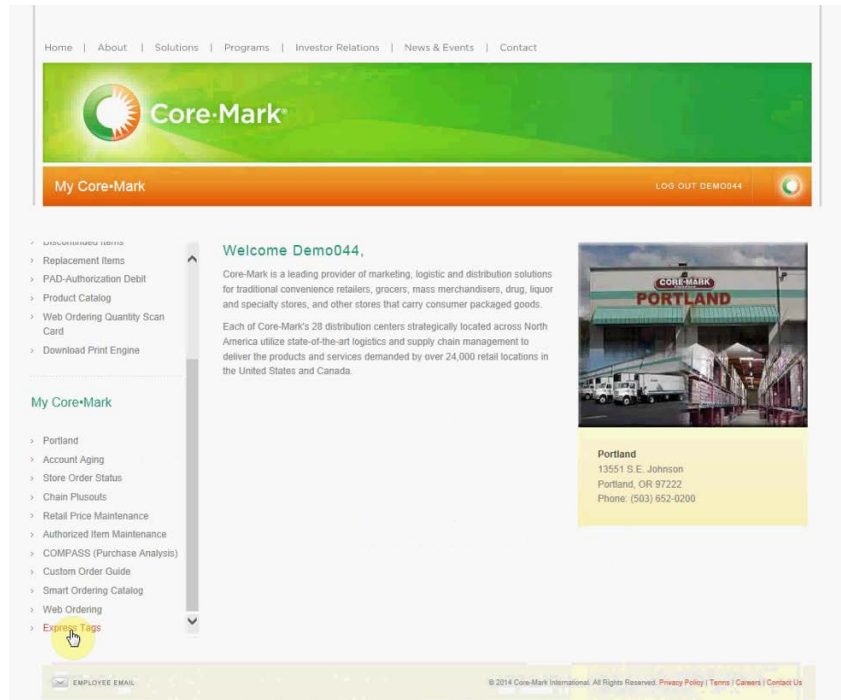


- 2.4 After Core-Mark Print Handler successfully downloads, go to www.core-mark.com. Log-in using your credentials.





2.5 On the left hand side of the screen, scroll down and click on “Express Tags”





2.6 On the top of the page, click on “Label Printer Setup”. Click “Allow” if an error message appears.

The image is a screenshot of the Core-Mark website. At the top, there is a navigation bar with links: Home, About, Solutions, Programs, Investor Relations, News & Events, and Contact. Below this is a green banner with the Core-Mark logo. Under the banner is an orange navigation bar with the text "My Core-Mark" and several links: ADVANCED SEARCH, LABEL PRINTER SETUP (highlighted with a yellow circle and a mouse cursor), END SESSION, and ITEM# SEARCH. Below the navigation bar is a search bar with a "GO" button. The main content area is titled "Express Tag Product Search". On the left, there is a "Select Product Category" list with various food and beverage categories. In the center, there is a search form with fields for "Core-Mark Item Number", "Retail UPC", "Commodity" (a dropdown menu set to "All"), "Item Description", "Primary Keyword", "Secondary Keyword", and "Manufacturer Name". A "Search" button is at the bottom of the form. Below the search form, there is a green banner with the Core-Mark logo. At the bottom of the page, there is an Internet Explorer security warning dialog box. The dialog box has a yellow background and a red "X" icon. It says "A website wants to open web content using this program on your computer." and provides details about the program: "Name: NicotLabel, The Professional Labeling Software" and "Publisher: Euro Flux d.o.o.". There are "Allow" and "Don't allow" buttons at the bottom of the dialog box. A yellow circle and a mouse cursor are pointing at the "Allow" button.

Note: If the “Print Engine” status is a fail, re-download the print handler by clicking the hyperlink.



2.7 Ensure the Printer Name is “TSC TTP-244CE”.

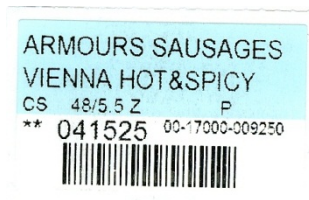
A screenshot of the CoreMark Label Printer Setup web application. The interface has a green header with the Core-Mark logo and a navigation bar with "My Core-Mark" and "END SESSION" links. Below the header, the title "CoreMark Label Printer Setup" is displayed. The main section is titled "Label Printer Requirements" and contains a table with four rows: JavaScript (PASS), Internet Browser (FAIL), ActiveX Filtering (PASS), and Print Engine (PASS). Below this table is a "Test Label Printing" section with a yellow circular icon. It includes a table with "Enter" and "Value" columns. The "Label Format" is set to "Label Type A", "Label Data" is "AARMOURS SAUSAGESVIENNA HOT&SPICYCS48/5.5 ZP **04152500-17000-009250 041525", "Quantity to Print" is "1", and "Printer Name" is "TSC TTP-244CE". A "Print" button is at the bottom right of the form.

2.8 Click “Print” and your label will print from your printer!

3 Test the Label Printer

Once the Print Engine is installed, refreshing or revisiting the Label Printer Setup page should confirm the presence of the engine, as evident by the **PASS** result for the Print Engine test. The test Notes also confirm the successful detection and open connection by displaying the Print Engine version installed.

Successful printing is confirmed by the following label being printed...



NOTE: *Once a successful print has completed, the printer name is automatically saved for the customer in the database for use by the various “My Core-Mark” applications that integrate Retail Label printing. If the name changes in the future, the customer revisits the Label Printer Setup page, updates the printer name and performs a test print to have the new name “stick”.*



4 Printing Labels from My Core-Mark Applications

Various My Core-Mark web applications now implement new Shelf Label print capabilities. One of these is the “Custom Catalogue” application which now incorporates a Shelf Label Print button for each item within a retrieved item list.

The screenshot shows the Core-Mark web application interface. At the top is the Core-Mark logo and navigation links: Home, About, Solutions, Programs, Investor Relations, News & Events, and Contact. Below this is a search bar with the text 'My Core-Mark' and buttons for 'ADVANCED SEARCH', 'LABEL PRINTER SETUP', 'END SESSION', and 'ITEM# SEARCH'. A 'GO' button is also present. The main content area is titled 'D J's Mini Mart *ss' and 'Item Selection'. A 'Print Order Guide' button is visible. The table below lists items with columns for Item, Description, UPC, Cost, Retail, and Shelf Label. A yellow arrow points to the 'Print' button in the 'Shelf Label' column for the first item.

Item	Description	UPC	Cost	Retail	Shelf Label
874479	Bosco Bar Milk -12/3.5 Z	898136001080	22.860	2.84	Print
898866	Dove Bar Lrg Dk Choc/almond -12/3.3 Z	040000401919	21.860	2.72	Print
893289	Dove Bar Lrg Rasp/dark Choc Swt-12/3.3 Z	040000408543	21.860	2.72	Print
893271	Dove Bar Lrg Whte/milk Choc Swt-12/3.3 Z	040000417118	21.860	2.72	Print
898940	Dove Bar Lrg 71% High Cocoa -12/3.3 Z	040000401902	21.860	2.72	Print
898957	Dove Large Bar Choc Walmond -12/3.3 Z	040000401872	21.860	2.72	Print
898825	Dove Large Bar Dark Choc -12/3.3 Z	040000401896	21.860	2.72	Print
898833	Dove Large Bar Milk Choc -12/3.3 Z	040000401452	21.860	2.72	Print
529107	Ghirldi Prestige Dark & Mint -12/3.5 Z	747599607639	27.460	3.42	Print
400004	Ghirldi Dark Chocolate - 12/3.5 Z	747599607639	27.460	3.42	Print

Clicking on a “Print” button for an item should cause a single label to be printed...

